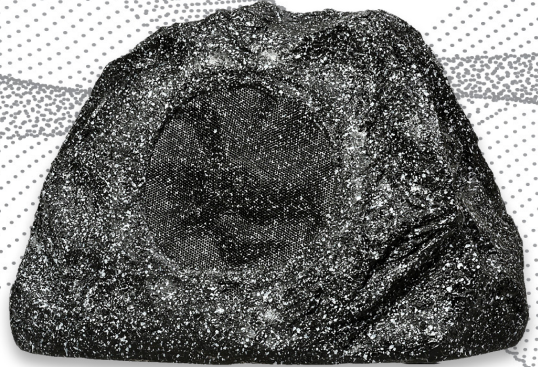




ROCK6

WEATHER RESISTANT OUTDOOR SPEAKER



USER MANUAL

INTRODUCTION

Thank you for your purchase of this M-Pro Rock Speaker. The M-Pro All weather Rock Speaker is a two way design using a coaxial high performance loudspeaker with a wide angle coverage.

The ROCK 6 can be used as a single channel speaker or as a part of a chain speakers.

The ROCK 6 is constructed of durable waterproof materials such as LLDPE enclosure and power coated aluminium griller, polymer woofer and polymer dome tweeter. This ensures that the speaker will look and sound good for years in difficult environmental places.

PLACEMENT

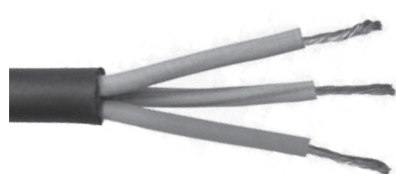
The M-Pro All-Weather Rock speaker is perfect for lawns, gardens, patios, decks or any other place where exposure to the elements makes conventional loud-speaker usage unsuitable. Due to its aesthetic design and up-tilted orientation, this model is designed for low or ground level placement.

To achieve the best performance from a pair of ROCK 6, place them on the same side of your intended listening area and space them 2,5m – 6m apart.

If a single ROCK 6 is connected in a two channel configuration it is best to center the speaker on the preferred side for even coverage. Some additional Bass will result if you place the speakers in a corner or near a wall.

CONNECTIONS / WIRING

Important: Proper connection of your speakers to your 100V amplifier is vital to obtaining good sound quality. Please follow these directions carefully.



BLUE (COMMON)

YELLOW / GREEN (30W / 70V)

BROWN (30W / 100V)

The ROCK 6 is provided with a 3-conductor cable. One input uses BROWN for positive (100V) and BLUE for negative, the YELLOW is positive for 70V connection. Make sure your receiver/amplifier can accept a High impedance 100V or 70V loads.

MOUNTING

The ROCK 6 includes a security of 2 eyelets on the underside of the speaker. This permanent eyelets can be used to stabilize the speaker on the ground in combination with the two metal mounting parts and the screws.

MAINTENANCE AND CARE

Your ROCK6 is designed to withstand the elements and be placed outdoors year round. If cleaning is desired, simply use a damp cloth to wipe down the outer surface of the speaker. Using chemical cleaners is not recommended. Avoid spraying water from a hose or sprinkler since this could damage the speaker components, especially the high performance tweeters. Cover the ROCK6 when applying lawn fertilizer and chemicals.

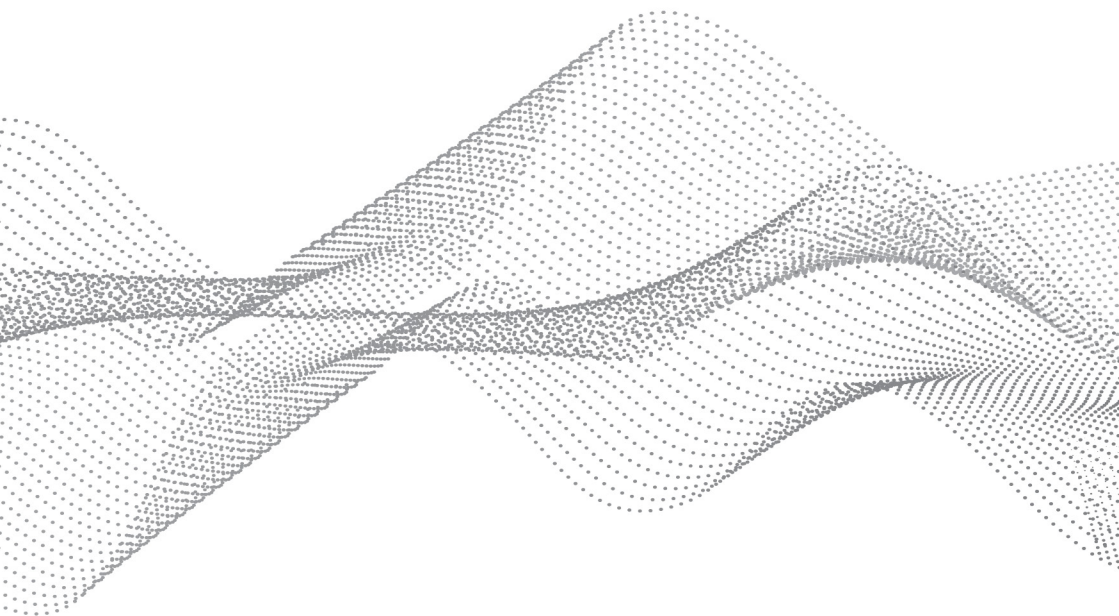
Important: No user-serviceable parts inside. Refer all servicing to qualified service personnel.

Notes:

- The most common damages on speakers are caused by amplifiers with too little power.
- When the amplifier is overdriven, sends distortion to the speakers.
- Clipping is usually audible, it may vary from a harsh sound to a fuzzy or unclear sound.
- If you hear this condition at loud volume levels turn down the volume until the distortion is no longer present.
- Damage caused by operating the speakers at distorted volume is not covered by the warranty.

TECHNICAL SPECIFICATIONS

Model	ROCK6
Frequency Response (-10dB):	85 Hz - 20 kHz
Sensitivity (1W / 1m):	89 dB
Impedance:	8 Ohm
Power RMS:	40 W
Power Peak:	80 W
Fixed Transformer:	70V: 30W 100V: 30W
Enclosure Material:	LLDPE
IP Rating:	IP56



Salaminos 18, 15124 Marousi Attiki, Greece
email info@mprosystems.gr www.mprosystems.gr